



Standard Glass™

Customer Inspired Excellence

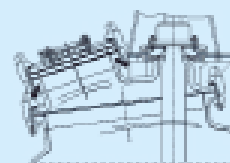
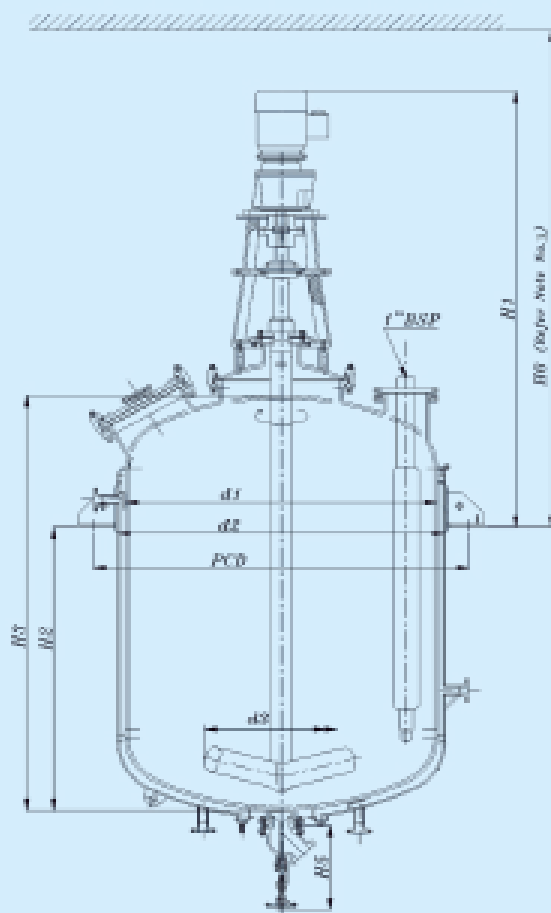
CE Reactors



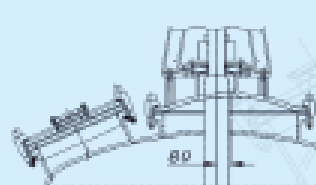
Introduction

This model is of mono-block construction with small top cover clamped to vessel, and manufactured from 1600 to 16000 liters capacity as per DIN 28136 standard, and other major components are as per respective DIN standards.

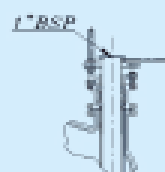
GEOMETRICAL DATA



*Center opening for
1600 to 4000 Capacity*



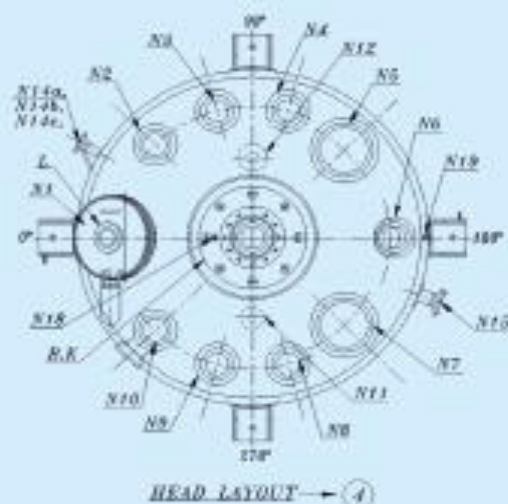
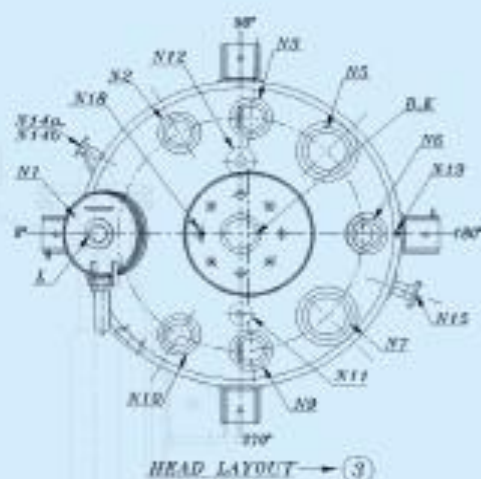
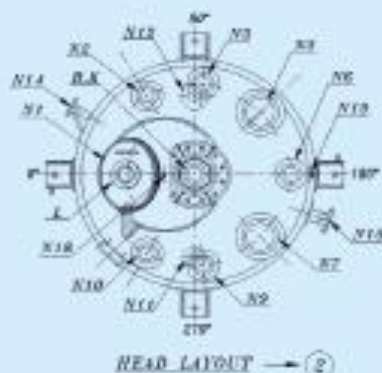
*Center opening for
5000 to 6000 Capacity*



*Raffle Stuffing Box
Assy. for capacities
from CE 8000*

Capacity (Liters)	Main Dimensions									Total Volume (Liters)	Jacket Volume (Liters)	Raffle Transfer Area (m ²)	Raffle Capacity (t/h)	Total Weight (kg)
	Vessel OD d1	Jacket OD d2	d3	PCD	H1	H2	H3	H4	H5					
1600	1400	1600	640	1780	2370	877	1672	521	4098	2647	284	8.5	5	3580
2000	1400	1600	640	1780	2370	1108	1784	521	4258	2718	318	7.4	5	3712
3000	1600	1700	660	1980	2415	1212	1986	521	4625	3247	420	9.3	5	4845
4000	1800	1900	1100	2210	2844	1523	2383	521	5108	4873	511	12.2	7.5	5480
5000	2000	2100	1100	2414	2950	1527	2534	572	5178	6058	580	13.5	10	7080
6000	2000	2100	1100	2414	3000	2023	2530	572	5858	7905	791	18.5	12.5	7580
8000	2300	2300	1100	2614	3294	1843	3000	572	6385	9300	788	18.8	15	8880
10000	2400	2500	1350	2868	3468	2064	3183	572	6818	11800	981	21.8	15	11200
12000	2400	2500	1350	2868	3468	2664	3783	572	7418	14500	1056	20.1	20	13050
16000	2600	2800	1500	3230	4805	2481	3783	572	7858	19000	1116	28.3	20	16000

NOZZLE ORIENTATION



Capacity (liters)	Head Layout	Vessel & Cover Nozzles DN															Jacket Nozzles (Qty.) DN				
		N1	L	B	K	N2	N3	N4	N5	N6	N7	N8	N9	N10	N11	N12	N14 a,b,c	N15	N18	N19	
1900	1	350 450	100	150	100	-	100	-	200	190	200	-	100	-	60	60	60	60	10"	10"	
2000	1	350 450	100	150	100	-	100	-	200	190	200	-	100	-	60	60	60	60	10"	10"	
3000	2	250 450	100	150	100	100	100	-	200	190	200	-	100	100	60	60	60	60	10"	10"	
4000	2	500	100	150	100	250	150	-	190	190	190	-	190	250	60	60	60	60	10"	10"	
5000	3	900	100	200	150	250	150	-	190	190	190	-	190	250	60	60	50(2)	60	10"	10"	
6300	3	500	100	200	150	150	150	-	250	190	250	-	190	150	60	60	50(2)	60	10"	10"	
8000	4	600	100	200	150	150	150	300	190	300	150	190	190	60	60	50(2)	60	10"	10"		
10000	4	900	100	250	150	200	200	250	300	200	300	200	250	200	60	60	50(2)	60	10"	10"	
12500	4	900	100	250	150	200	200	250	300	200	300	200	250	200	60	60	50(2)	60	10"	10"	
16000	4	900	100	250	150	200	200	250	300	200	300	200	250	200	60	60	50(2)	60	10"	10"	

NOTES:

- All Dimensions are in 'mm', unless otherwise specified.
- Without Prior notice, Specifications are subject to change for continual improvement.
- H6 is the minimum distance required from lug level, to remove the agitator.
- Custom built capacities can also be manufactured on customer request.

1. Codes & Standards

1	Design & Construction	ASME Sec. VIII, Division – I, Latest Edition.
2	Main Dimensions	DIN 28136
3	Flange Drilling	ANSI - B 16.5 # 150

2. Design Data

Sl. No.	Description	Units	Vessel	Jacket
1	Pressure	Kg/cm ² (g)	EV. to 6	6
2	Temperature	°C	-28.8 to 200	-28.8 to 200
3	Corrosion Allowance (Base Metal)	mm	1.5	1.5
4	Weld Joint Efficiency	...	1.0	0.65
5	Glass Lining Thickness	mm	Min. 1.0, Max. 3.0	

3. Agitating System

Sl. No.	Description	Details
1	Agitator	Propeller
2	RPM	98
3	Allowable Max. RPM	120
4	Agitator Mounting	Two taper roller bearings back to back assembly on drive stand.
5	Agitator Drive	Coupled with intermediate bearing on drive stand.
6	Shaft Seal	Single Mechanical Seal with bearing.
7	Gear Box Drive	Inline Helical, Bonfiglioli make or equivalent.
8	Motor	Flame proof motor, flange mounted, Crompton make or equivalent.

4. Features

Sl. No.	Standard	Optional
1	Agitator	Propeller agitator with intermediate Propeller / PBT
2	Baffle-cum-thermowell	Baffle-cum-thermowell with tantalum tip
3	Flush bottom valve assy	Flush bottom valve assy. with thermosensor & tantalum tip

5. Other Optional Features

1	Jacket and Top cover insulation & cladding (Refer our Product attributes Doc. No.SPA-03 for GMP Equipment)
2	PTFE Lined dip pipe, PTFE Lined Spurges, PTFE 'J' Pipe, PTFE spray ball arrangement
3	Flush Bottom Valve Assembly : Bottom Opening type, Below support type, Pneumatic actuator type & Poker type